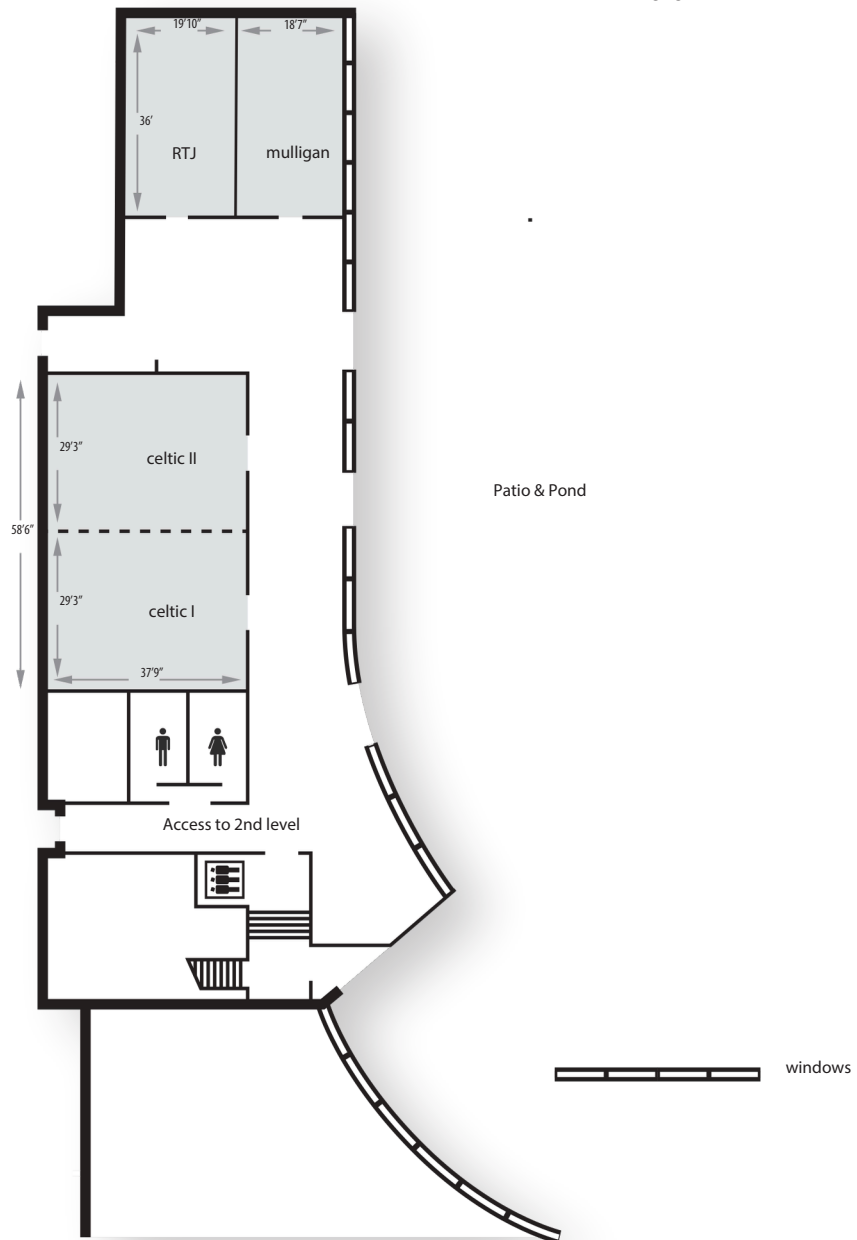




brookstreet  
HOTEL

MEETING & EVENT SPACE

# LOWER LEVEL FLOORPLAN



This document contains approximate measurements and square footage that are for illustrative purposes only. We cannot guarantee the floor plan accuracy, please review the space to make sure it is suitable for your event.

brookstreet.com



brookstreet  
HOTEL

MEETING & EVENT SPACE

## LOWER LEVEL

CAPACITY CHART

	Area (sq.ft)	Ceiling Height (ft)	Boardroom	U-Shape	Theatre	Classroom	Hollow Square	Rounds 10 72" tables	Rounds 8 60" tables	Half Rounds of 6	Reception
Celtic Ballroom	2220	14	48	50	175	120	58	150	140	90	250
Celtic I	1110	14	28	30	80	60	32	60	72	36	100
Celtic II	1110	14	28	30	80	60	32	60	72	36	100
Mulligan	750	11	20	24	70	30	28	40	40	24	50
RTJ	750	11	20	24	70	30	28	40	40	24	50

All capacities shown above reflect a maximum set-up and do not include space for audio visual, dance floors or other special requirements.

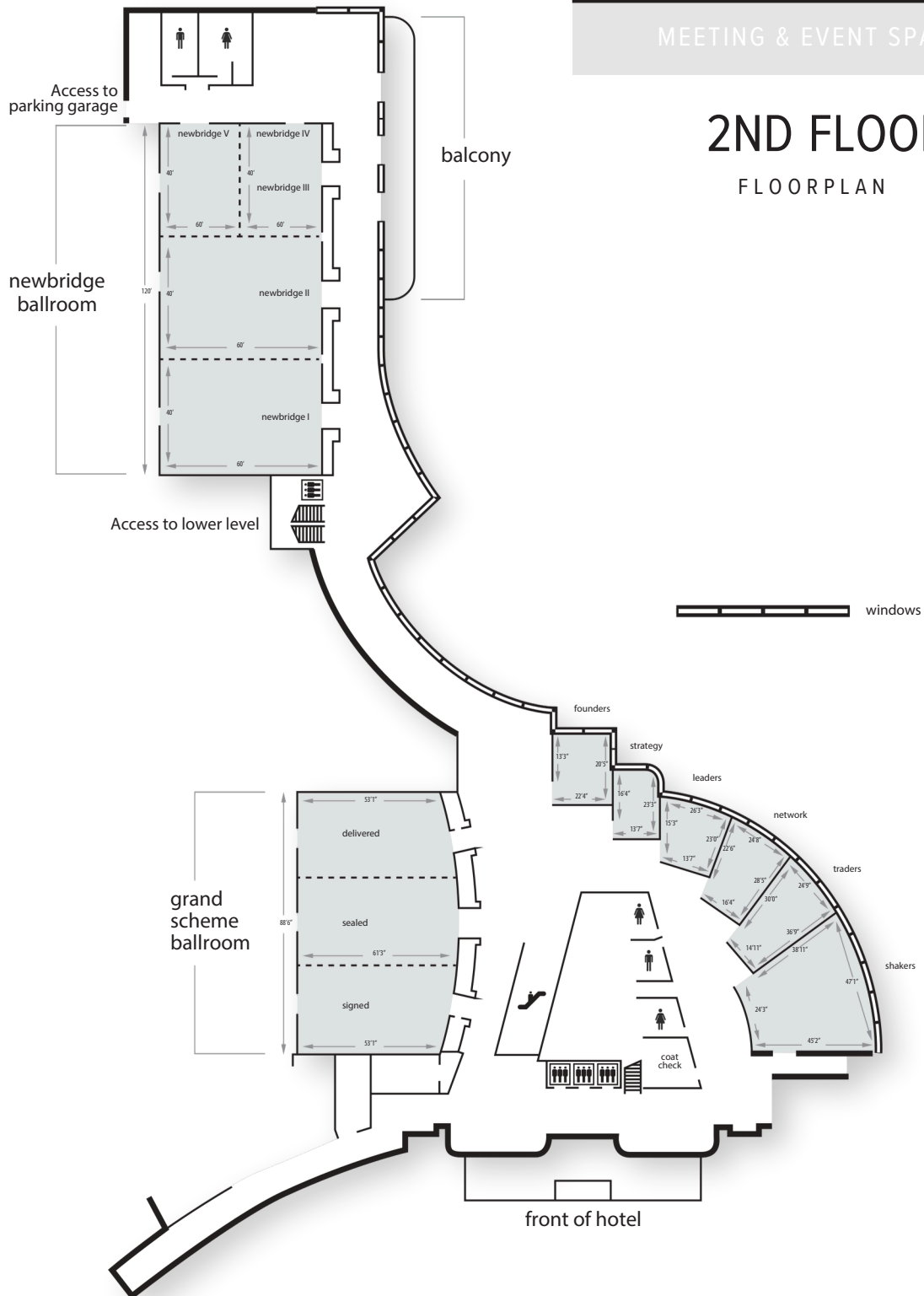
This document contains approximate measurements and square footage that are for illustrative purposes only. We cannot guarantee the floor plan accuracy, please review the space to make sure it is suitable for your event.



brookstreet  
HOTEL

MEETING & EVENT SPACE

# 2ND FLOOR FLOORPLAN



This document contains approximate measurements and square footage that are for illustrative purposes only. We cannot guarantee the floor plan accuracy, please review the space to make sure it is suitable for your event.

brookstreet.com



brookstreet  
HOTEL

MEETING & EVENT SPACE

## 2ND FLOOR

### CAPACITY CHART

	Area (sq.ft)	Ceiling Height (ft)	Boardroom	U-Shape	Theatre	Classroom	Hollow Square	Rounds 10 72" tables	Rounds 8 60" tables	Half Rounds of 6	Reception
Newbridge Ballroom	7200	20	-	-	600	400	-	400	400	300	1200
Newbridge I & II or II & III	4800	20	-	-	400	300	-	300	280	210	700
Newbridge I, II or III	2400	20	48	54	200	150	64	150	170	90	300
Newbridge IV or V	1200	20	28	30	100	60	34	60	80	48	120
Grand Scheme Ballroom	5190	17	-	-	500	200	-	300	280	210	500
Signed-Sealed or Sealed-Delivered	3460	17	56	60	250	160	80	200	160	150	250
Signed or Sealed or Delivered	1730	17	40	50	110	80	60	100	80	60	125
Shakers	1650	9.5	32	36	110	75	40	90	104	66	150
Traders	720	9.5	20	20	50	24	20	40	40	24	50
Network	600	9.5	18	15	40	24	18	30	40	24	40
Founders	510	9.5	10	12	30	18	16	30	24	18	20
Leaders	490	9.5	12	14	30	16	14	30	32	24	25
Strategy	365	9.5	12	-	-	-	-	-	-	-	-

All capacities shown above reflect a maximum set-up and do not include space for audio visual, dance floors or other special requirements.

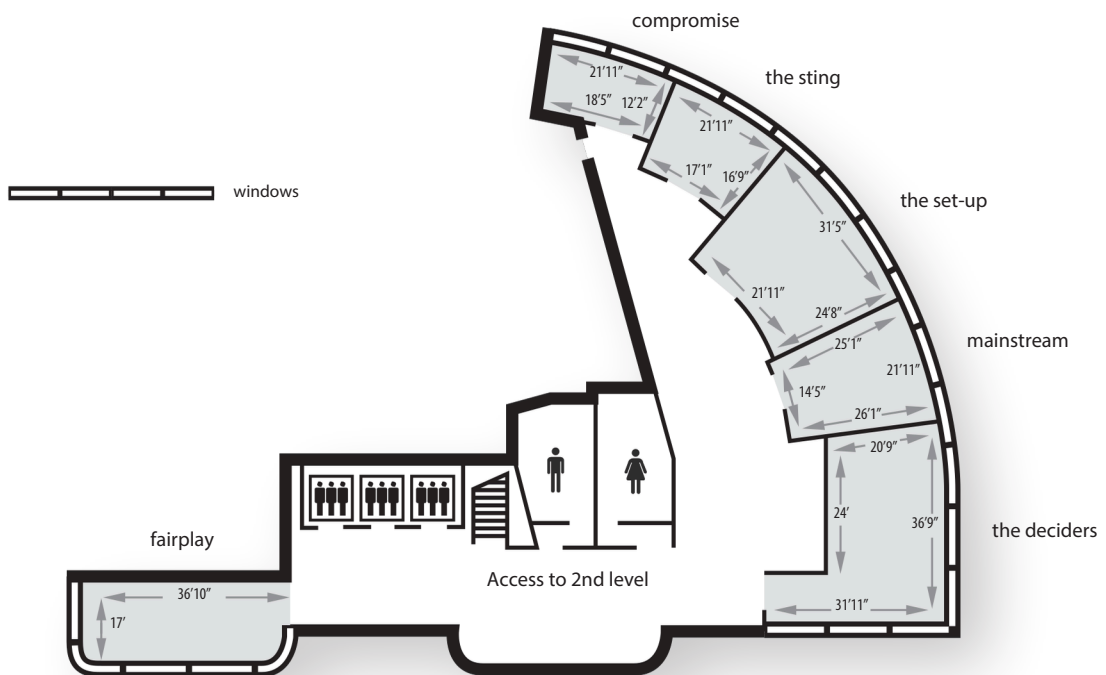
This document contains approximate measurements and square footage that are for illustrative purposes only. We cannot guarantee the floor plan accuracy, please review the space to make sure it is suitable for your event.



brookstreet  
HOTEL

MEETING & EVENT SPACE

# 3RD FLOOR FLOORPLAN



This document contains approximate measurements and square footage that are for illustrative purposes only. We cannot guarantee the floor plan accuracy, please review the space to make sure it is suitable for your event.

brookstreet.com



brookstreet  
HOTEL

MEETING & EVENT SPACE

## 3RD FLOOR

CAPACITY CHART

	Area (sq.ft)	Ceiling Height (ft)	Boardroom	U-Shape	Theatre	Classroom	Hollow Square	Rounds 10 72" tables	Rounds 8 60" tables	Half Rounds of 6	Reception
Deciders	700	9.5	24	22	50	24	24	40	48	30	60
Set-Up	680	9.5	16	16	40	20	28	30	40	18	50
Fair Play	560	9.5	18	-	-	-	-	-	-	-	-
Mainstream	490	9.5	16	16	20	18	16	20	24	18	30
Sting	320	9.5	10	-	-	-	-	-	-	-	-
Compromise	245	9.5	10	-	-	-	-	-	-	-	-

All capacities shown above reflect a maximum set-up and do not include space for audio visual, dance floors or other special requirements.

This document contains approximate measurements and square footage that are for illustrative purposes only. We cannot guarantee the floor plan accuracy, please review the space to make sure it is suitable for your event.